

*Lighting solutions for all sizes of booths!*



## Classification and Optimal Booth Lighting Descriptions

<div style="background-color: #c00000; color: white; padding: 5px; text-align: center; width: 40px; margin-bottom: 10px;"><b>1</b></div> <p><b>Surface Mount Installation</b></p>	<p>Class 1, Division 1 Paint/Spray Listed Explosion-Proof</p>	<p>Fixtures are designed and listed to be surface mounted inside an area where flammable gases/vapors are always present.*</p> <ul style="list-style-type: none"> <li>• Paint / Powder Booths</li> <li>• Mixing Rooms</li> </ul>
<div style="background-color: #c00000; color: white; padding: 5px; text-align: center; width: 40px; margin-bottom: 10px;"><b>2</b></div> <p><b>Recess Mount Installation</b></p>	<p>Class 1, Division 2 Paint/Spray Listed Hazardous</p>	<p>Fixtures are designed and listed to be recess mounted into the booth walls or ceiling and are considered to be integral to the wall or ceiling after installation.*</p> <ul style="list-style-type: none"> <li>• Paint / Powder Booths</li> <li>• Blast Booths</li> <li>• Paint Storage</li> </ul>
<div style="background-color: #c00000; color: white; padding: 5px; text-align: center; width: 40px; margin-bottom: 10px;"><b>3</b></div> <p><b>Non-Classified</b></p>	<p>Ordinary Location Non-hazardous</p>	<p>Fixtures that are designed and listed to be mounted <u>outside</u> a classified area where flammable gases or vapors are present. Fixtures are separated from the spray area by a glass panel and meet the requirements of that area.*</p> <ul style="list-style-type: none"> <li>• Paint Booths (Behind Glass)</li> <li>• Prep Areas</li> </ul>

*\*Reference NFPA33 & NEC codes and standards for compliance*

<div style="background-color: #008000; color: white; padding: 5px; text-align: center; width: 40px; margin-bottom: 10px;"><b>LED</b></div>	<p><b>Optimal Booth Lighting</b></p>	<p>5,000K CCT → Bright white light Diffused Optics → Prevents pixelation, railroading, or seeing spots</p>
--	--------------------------------------	--



\* Red product name indicates product is BAA Compliant

\*Not all LDPI Inc. fixture configurations are BABA compliant.  
Contact LDPI Sales with specific part number and specific requirement for confirmation.

**1** Class 1, Division 1  
Explosion Proof

**LE551**  
2,470 to 16,050Lm  
24W to 128W  
UL Listed  
EM option available



**LEXSG2**  
3,580 to 10,800Lm  
30W to 80W  
UL Listed  
EM option available



**LEXF1**  
2,470 to 8,510Lm  
21W to 60W  
UL Listed

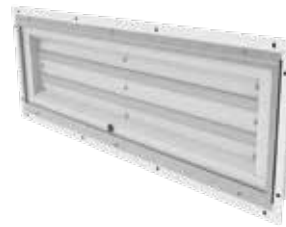


**LEXFG2**  
11,830 to 21,230Lm  
80W to 150W  
UL Listed

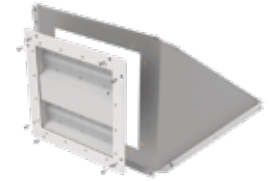
**2** Class 1, Division 2  
Hazardous



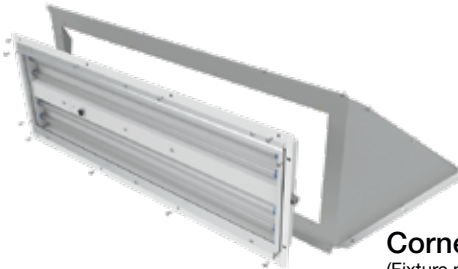
**LE485R / LE485R-2FT.**  
4,410 to 23,710Lm  
43W to 180W  
ETL Listed  
EM option available



**LE485 / LE485E**  
**LE485-2FT**  
4,410 to 23,710Lm  
43W to 180W  
ETL Listed  
EM option available



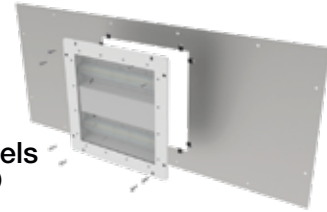
**Corner Mount #18780**  
(Fixture not included)



**Corner Mount #5084**  
(Fixture not included)



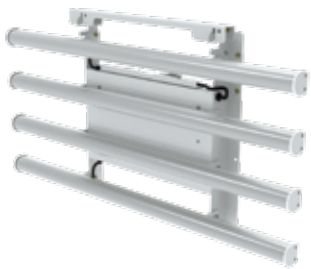
**LE484**  
8,270 to 9,070Lm  
75W  
ETL Listed



**Retro-fit Panels**  
(Fixture not included)

\* Listed for use outside a paint booth behind a glass panel

**3** Non-classified  
Ordinary Location\*



**LE158H**  
2,580 to 61,400Lm  
21W to 504W  
UL Listed



**LE180**  
6,640 to 11,400Lm  
53W & 75W  
UL Listed

**4** Lens  
Protection



**Protective Lens Film**



**Blast Booth Covers**