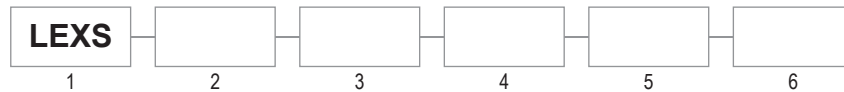


The LEXS is designed and listed for CI D1 explosive environments, marine, and wet locations. This fixture offers directional mounting, is Paint Spray listed for use in paint or powder booths and features silicone-free gaskets that are safe to use in a paint booth.



1 SERIES	2 SOURCE	3 VOLTAGE	4 CCT	5 OPTICS / BEAM	6 LENS	Product comes standard with
LEXS	L1: 2Ft. / 40W L2: 4Ft. / 80W	V1: 120-277VAC (50/60Hz) V2: 347-480VAC (50/60Hz)	3: 3,000K 4: 4,000K 5: 5,000K	V110: 110° TYPE V V60: 60° TYPE V	C: Clear D: Diffused	(3) 3/4" Hubs Yoke Bracket pre-installed 10Kv surge protector built-in 3Ft. 3-Wire whip, factory installed

CERTIFICATIONS

UL844 / CSA-C22.2 No.137 (Hazardous)
 CI D1 Grps C,D
 CI D2 Grps A,B,C,D
 Simultaneous Presence
 Paint Spray Listed
 T-Code: CI D1=T6
 UL1598 / CSA-C22.2 No.250 (Wet/Damp)
 UL1598A (Marine Outside)
 DLC (inquire for specific part numbers)
 Lumen Maintenance (L70) >60,000 hrs. (reported)
 CRI >70
 -40°C to 60°C Ambient
 RH Ambient Humidity 10% to 90%
 IP66
 NEMA 3 and NEMA 4X
 FCC

PERFORMANCE

Source	Voltage (VAC) 50/60Hz	Input Current (A)	Wattage (W)	CCT	Lumen Output* (Lm)	
					Clear Lens	Diffused Lens
L1	120-277	.33 - .14	40	3,000K	4440	3510
				4,000K	4480	3520
				5,000K	5040	3800
L2	120-277	.66 - .29	80	3,000K	9550	7600
				4,000K	9560	7520
				5,000K	10260	7750

* Nominal values

CONSTRUCTION

Copper-free aluminum housing and yoke
 Silicone-free gaskets
 Powder coat black
 All exposed fasteners are stainless steel
 Thermal shock and impact resistant glass lens
 (3) 3/4" Hub locations
 Weights: 2Ft.-16 lbs. / 4Ft.-24 lbs.

ELECTRICAL

120-277 / 347-480VAC
 10Kv surge protector built in, standard
 3 Ft. 3-Wire whip standard, factory installed

FEATURES

High lumen output up to 120 Lm/W
 Shock and vibration resistant
 Mounting: Wall (Flood), Pole, Ceiling, Pendant, and Cable
 30° Yoke Adjustments (180° total)
 Light weight, compact design
 5 Year Warranty



Clear Lens



Diffused Lens

LEXS

EXPLOSION PROOF

Paint/Powder Booths • Chemical Processing • Industrial • Oil / Gas • Shipyards / Marine • Water Treatment



ACCESSORIES - (Field Installed, Order Separately)

Part Number	Description	
PC01*	Pole Mount Pipe Clamp Kit Stainless Steel 1-7/8" Dia. Includes: 2 Clamps	
PC02*	Pole Mount Pipe Clamp Kit Stainless Steel 2-3/8" Dia. Includes: 2 Clamps	
EB01*	End Bracket Cable Mount Kit 39.4" of adjustable length Stainless Steel Includes: 2 Cable Assemblies	

***Note: Stainless steel accessories not suitable for paint spray applications**



SUGGESTED MOUNTING



Ceiling / Wall / Pendant

Conduit and pole shown for illustration purposes only



#PC01* (1-7/8" Dia.)
#PC02* (2-3/8" Dia.)

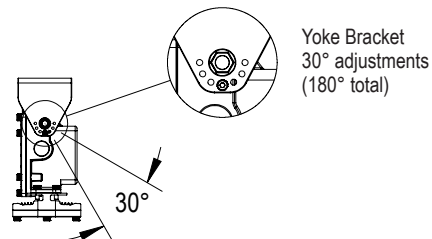
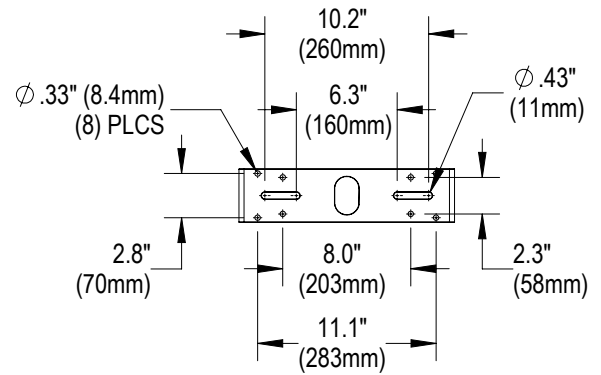
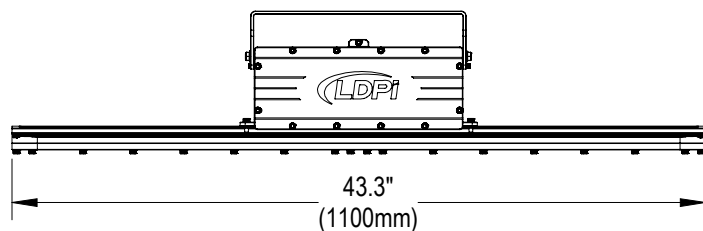
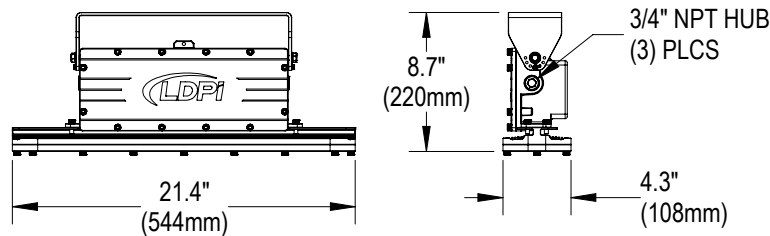
Pole*



*Cable Hang & Pole Mount Accessories
Field Installed. Order Separately

Cable*

DIMENSIONS



1-800-854-0021 www.ldpi-inc.com
LDPI® is a registered trademark of LDPI, Inc. © LDPI, Inc.

Product design and specifications subject to change without notice.
Visit www.ldpi-inc.com for the most current version and photometric data. v08.17.20