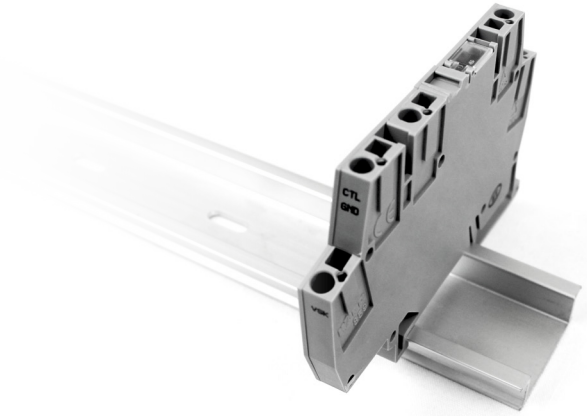
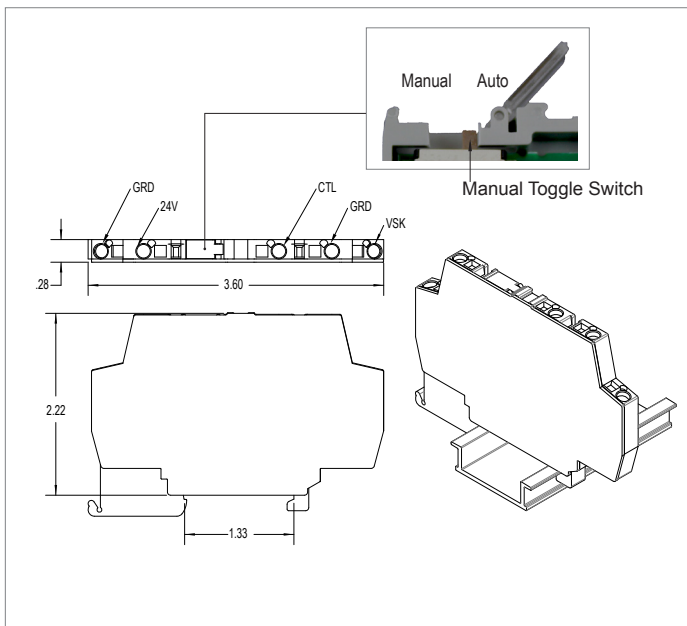


The LCM analog dimming amplifier creates a standardized 0-10V signal for use with LDPI lighting fixtures. This device allows the user to dim LDPI lighting fixtures with their existing industrial PLC using a 0-10V Analog output module. The LCM has a manual toggle switch that can override the PLC program and power lighting fixtures connected to it at 60%.



FEATURES

- Mounts to DIN-35 x 15mm rail
- Terminals accept 0.08-2.5mm²/28-14AWG (Solid/Stranded)
- Module is intended for installation inside an enclosure
- Module case material PA6.6
- Flammability Rating 94 V0
- RoHS Compliant



TECHNICAL DETAILS

Product Number	LCM-1A24
Channel	1
Supply Voltage	24V
Max. Input Voltage	24V: 24VDC CTL: 10VDC VSINK: 10VDC
Max. Input Current	24V: 100mA CTL: 100mA VSINK: 20mA*
Transfer Function	VSINK = CTL
Max. Operating Temp.	70°C
Max. Operating Ambient Temp.	50°C
AWG	0.08-2.5mm ² /28-14AWG (Solid/Stranded)
Wire Strip Length	5-6mm/0.2-0.24inch
Connection Mechanism	CAGE CLAMP®
Product Weight	0.06 lbs.
Approvals	UL 8750 CSA 22.2 No. 250.13-12

*Consult factory to determine the number of LDPI fixtures and type that can be connected to a single LCM module.

