



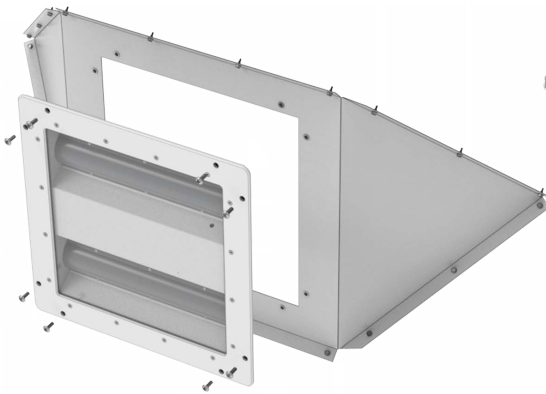
CORNER MOUNT KIT

HAZARDOUS - BOOTH - CORNER/HIP MOUNT

Industrial • Paint and Powder Booths • Blast Booths • Prep/Inspection • Sanding Areas

Corner Light Mounting - LE484 Series

The following is an acceptable method of installing panel mounted fixtures into the corner of a paint spray booth. Can be installed vertically in a corner, or horizontally in the hip of the booth. Includes all components required to install kit and route wiring conductors out of booth.



Fixture not included. Order separately.

FEATURES

Part Number: 18780

To reduce shadowing, corner or hip lighting is ideal.

Shipping weight: 14lbs.

KIT

18 gauge galvanized panel

Kit (delivered unassembled) Includes:

- Self tapping screws to mount panel to booth
- Bolts/Nuts to mount fixture to panel.
- Wire whip pre-wired to fixture.
- (4) feet of 1/2" Liquid-Tite Flexible conduit
- 90° Flex connector to exit booth
- Straight flex connector to secure flex to fixture
- (1) Tube of caulk to seal around panel and fixture perimeter

REQUIREMENTS

For use with the LE484 Series Fixture only. (Fixture Sold Separately)

Panel construction must meet the requirements of NFPA 33 Chapter 3, "Construction and Design of Spray Areas, Spray Rooms, and Spray Booths."

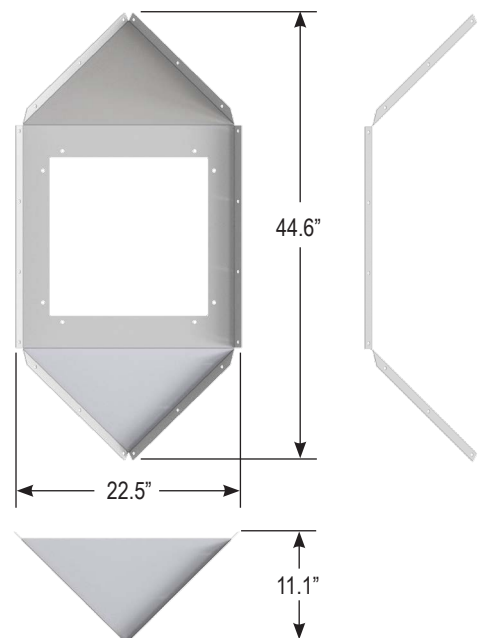
Fixture installation wiring to meet the requirements of NFPA 33 Chapter 4, "Electrical and Other Sources of Ignition."

OPTIONS

Powder Coat Finish

NOTES

Mounting requires drilling 7/8" hole in booth wall or ceiling to route flex conduit out of booth. All wiring must be performed by a certified electrician and in accordance with all national and local electrical codes and regulations.



Corner Light Mounting - LE481 / LE485 / LE485E Series

The following is an acceptable method of installing panel mounted fixtures into the corner of a paint spray booth. Can be installed vertically in a corner, or horizontally in the hip of the booth. Includes all components required to install kit and route wiring conductors out of booth.



Fixture not included. Order separately.

FEATURES

Part Number: 5084

To reduce shadowing, corner or hip lighting is ideal.

Shipping weight: 14lbs.

KIT

18 gauge galvanized panel

Kit (delivered unassembled) Includes:

- Self tapping screws to mount panel to booth
- Bolts/Nuts to mount fixture to panel.
- Wire whip pre-wired to fixture.
- (4) feet of 1/2" Liquid-Tite Flexible conduit
- 90° Flex connector to exit booth
- Straight flex connector to secure flex to fixture
- (1) Tube of caulk to seal around panel and fixture perimeter

REQUIREMENTS

For use with the LE485 / LE485E Series Fixture only. (Fixture Sold Separately)

Panel construction must meet the requirements of NFPA 33 Chapter 3, "Construction and Design of Spray Areas, Spray Rooms, and Spray Booths."

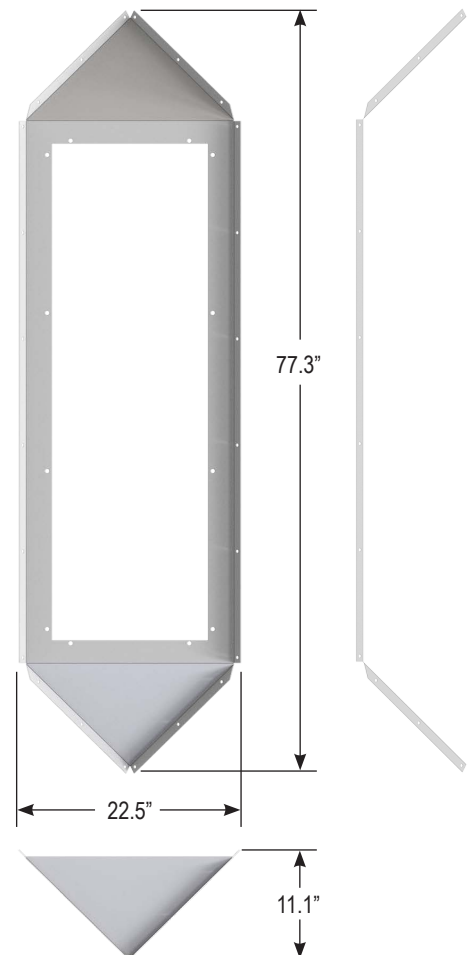
Fixture installation wiring to meet the requirements of NFPA 33 Chapter 4, "Electrical and Other Sources of Ignition."

OPTIONS

Powder Coat Finish

NOTES

Mounting requires drilling 7/8" hole in booth wall or ceiling to route flex conduit out of booth. All wiring must be performed by a certified electrician and in accordance with all national and local electrical codes and regulations.





CORNER MOUNT

HAZARDOUS - BOOTH - CORNER/HIP MOUNT

Industrial • Paint and Powder Booths • Blast Booths • Prep/Inspection • Sanding Areas

Corner Light Mounting - LED Slimlight

The following is an acceptable method of installing panel mounted fixtures into the corner of a paint spray booth. Can be installed vertically in a corner, or horizontally in the hip of the booth. Includes all components required to install kit and route wiring conductors out of booth.



Fixture not included. Order separately.

FEATURES

Part Number: 5084

To reduce shadowing, corner or hip lighting is ideal.

Shipping weight: 14lbs.

KIT

18 gauge galvanized panel

Kit (delivered unassembled) Includes:

- Self tapping screws to mount panel to booth
- Bolts/Nuts to mount fixture to panel.
- Wire whip pre-wired to fixture.
- (4) feet of 1/2" Liquid-Tite Flexible conduit
- 90° Flex connector to exit booth
- Straight flex connector to secure flex to fixture
- (1) Tube of caulk to seal around panel and fixture perimeter

REQUIREMENTS

For use with the LE485 / LE485E Series Fixture only. (Fixture Sold Separately)

Panel construction must meet the requirements of NFPA 33 Chapter 3, "Construction and Design of Spray Areas, Spray Rooms, and Spray Booths."

Fixture installation wiring to meet the requirements of NFPA 33 Chapter 4, "Electrical and Other Sources of Ignition."

OPTIONS

Powder Coat Finish

NOTES

Mounting requires drilling 7/8" hole in booth wall or ceiling to route flex conduit out of booth. All wiring must be performed by a certified electrician and in accordance with all national and local electrical codes and regulations.

