

# 383 SERIES

## EXPLOSION PROOF INCANDESCENT

DATE: \_\_\_\_\_ PROJECT MGR: \_\_\_\_\_

JOB: \_\_\_\_\_

PN: \_\_\_\_\_



Pendant Mount



Ceiling Mount



Bracket Mount

### APPLICATIONS

Paint Spray Booths  
Wet/Damp Locations  
Marine Locations  
Indoor & Outdoor  
Corrosive Areas

The 383 Series is a fixture designed for Explosion-Proof and Hazardous environments. The cast aluminum housing is completed with a heat and impact resistant globe. This product handles incandescent sources up to 300 watts but is limited to 75 watts in paint spray booth applications and features a single thumb screw for easy re-lamping. This product has multiple listings from UL and is UL844 listed. Lamp not included.

### SPECIFICATIONS

**LISTINGS:** Class I, Div. 1 and 2, Group C and D  
Incandescent Class II, Div. 1 and 2, Groups E, F and G  
Class III  
UL 844 listed U.S.




**FEATURES:** Explosion proof incandescent fixture for hazardous locations  
Cast aluminum construction with epoxy powder coat finish  
Heat and impact resistant prismatic glass globe with die cast guard  
Corrosion resistant


**ELECTRICAL:** 120 Volt  
Easy relamping with single thumb screw


**REFLECTOR:** Optional dome or angle reflector


**MOUNTING:** Pendant, ceiling or bracket  
Comes standard with 4 hubs.

**OPTIONS:** ALL OPTIONS ORDERED SEPARATELY

Standard dome reflector: P/N 3918  
 Direct light down with a dome reflector. Highly reflective finish over heavy gauge aluminum base. Field installation with 4 screws. **Does not fit bracket mount.**

Angle reflector: P/N 3919  
 Direct light down and to the side with a 30° angle reflector. Highly reflective white epoxy finish over heavy gauge aluminum base. Field installation with 4 screws.

4 hole box: P/N 3920-EXB shown  
 Explosion proof junction box for wiring or pendant fixture hanging. 4 NPT tapped hubs in sides. 3 close-up plugs provided. Blank, 1/2" or 3/4" tapped covers.

8 hole box: P/N 3921-EXJ1 shown  
 Explosion proof junction box for wiring or pendant fixture hanging. 6 tapped hubs in sides, 2 in bottom. 7 close-up plugs provided. Blank, 1/2" or 3/4" tapped covers.

### EXPLOSION PROOF INCANDESCENT

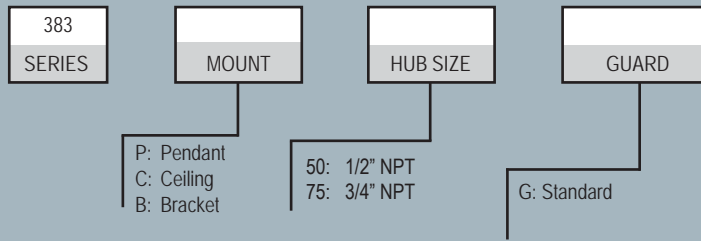


# 383 SERIES

## EXPLOSION PROOF INCANDESCENT



www.ldpi-inc.com



NOTE:  
• Standard Color: Gray

LAMPS SOLD SEPARATELY

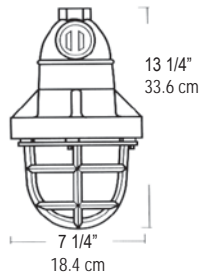


UL US LISTINGS:				Maximum Wattage		
Location Class	Div.	Operating Groups	Without Temp. code	W/Std. Dome Reflector	W/30° Dome Reflector	Reflector
I	1 & 2	C & D	T3C	300	300	300
	1 & 2	D	T4A	75	-	-
II	1 & 2	E & F	T3	200	150	200
	1 & 2	E, F & G	T3C	100	-	150
III	-	-	T3C	100	100	150

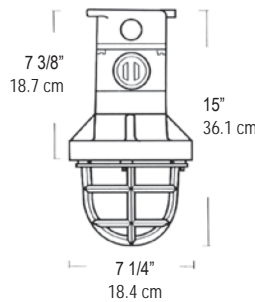


### DIMENSIONS (Nominal)

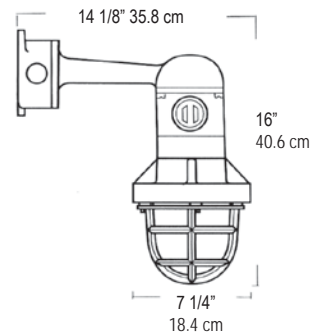
383 Pendant Mount



383 Ceiling Mount  
Comes standard with 4 Hole Box



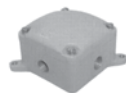
383 Bracket Mount  
Comes standard with 4 Hole Box



### Optional Mounting Hubs

#### 4 Hole Box

Explosion Proof junction box for wiring. With cover tap it allows pendant fixture hanging. 4 NPT tapped hubs in sides. 3 close-up plugs provided. Blank, 1/2" or 3/4" NPT tapped covers.



Standard Box 4 hubs - Blank cover



4 Hub box with 1/2" NPT cover tap  
3920-EXB1



Cover Tap	1/2" NPT Side Hubs	3/4" NPT Side Hubs
Blank	3920-EXB	3920-EXB-3/4
1/2"	3920-EXB1	3920-EXB1-3/4
3/4"	3920-EXB2	3920-EXB2-3/4

#### 8 Hole Box

Explosion Proof junction box for wiring. With cover tap it allows pendant fixture hanging. 6 NPT tapped hubs in sides, two in bottom. 7 close-up plugs provided. Blank, 1/2" or 3/4" NPT covers.



Optional Box 8 hubs 1/2" NPT cover



8 Hub box with 1/2" NPT cover tap  
3921-EXJ1



Cover Tap	1/2" NPT Side Hubs	3/4" NPT Side Hubs
Blank	3921-EXJ	3921-EXJ-3/4
1/2"	3921-EXJ1	3921-EXJ1-3/4
3/4"	3921-EXJ2	3921-EXJ2-3/4